



Wyresdale Road, Liverpool

OIRO £175,000 Freehold

NEW TO THE MARKET

Description

Bespoke Sales & Lettings are pleased to welcome to the market this beautifully presented four bedroom, mid terrace home situated on the sought after Wyresdale Road.

The property is perfect for a First Home Buyer or Investor looking for a turn key property. The property has a beautiful open plan floor plan and large windows filling the space with natural light.

The home benefits from its generously sized rooms, gas central heating, double glazed windows throughout and is situated in an ideal location close to, bus links and Aintree train station ideal for commuting to the City Centre & Southport and local amenities including, retail and grocery shops and cafes.

The ground floor briefly comprises of; entrance hallway, living room with a large bay window and open plan to second sitting area, neutral fitted kitchen with electric oven and gas cooktop above integrated extractor fan with open plan dining area, downstairs laundry room, and downstairs toilet.

The ground floor also offers a secure wall enclosed paved yard with an area of artificial grass.

The first floor offers a carpeted landing. Spacious master bedroom with a large bay window to the front, Family bathroom and a further three spacious bedrooms.



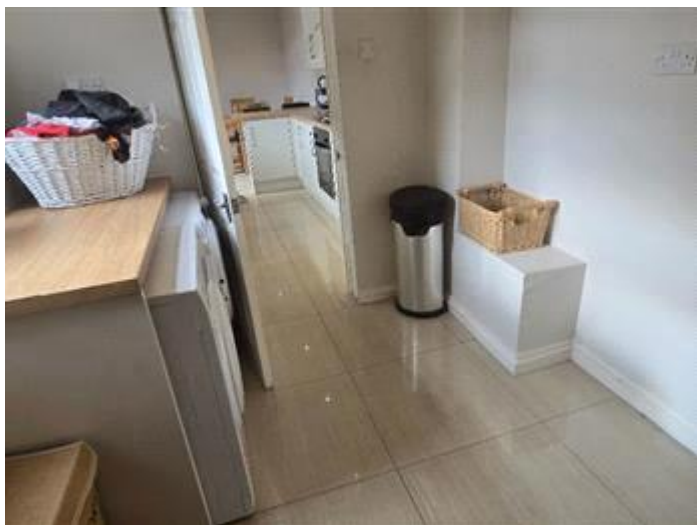
The property also has a shed that can be used for storage or an extra multipurpose space.

Viewings are highly recommended!

Tenure - Freehold
Local Authority - Liverpool
Council Tax Band - B
EPC Rating -

Tenure: Freehold
Parking options: On Street
Garden details: Enclosed Garden, Front Garden, Private Garden, Rear Garden

Tenure
Freehold



Energy Efficiency Rating		
	Current	Potential
Very energy efficient - lower running costs		
(92+) A		
(81-91) B		
(69-80) C		
(55-68) D	65	69
(39-54) E		
(21-38) F		
(1-20) G		

Viewing by appointment only
 Bespoke Lettings & Property Management - Head Office
 352 Longmoor Lane, Liverpool, Merseyside L9 9DA
 Tel: 0151 345 6554 Email: sue@bespoke-lettings.co.uk Website: <http://www.bespoke-lettings.co.uk>